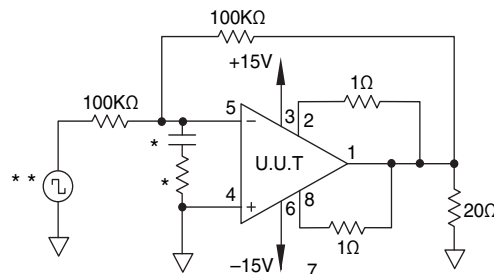


# PA51M/883

SG	PARAMETER	SYMBOL	TEMP.	POWER	TEST CONDITIONS	MIN	MAX	UNITS
1	Quiescent current	$I_Q$	25°C	±34V	$V_{IN} = 0, A_V = 100, R_{CL} = .1\Omega$		10	mA
1	Input offset voltage	$V_{OS}$	25°C	±34V	$V_{IN} = 0, A_V = 100$		±10	mV
1	Input offset voltage	$V_{OS}$	25°C	±10V	$V_{IN} = 0, A_V = 100$		±16	mV
1	Input offset voltage	$V_{OS}$	25°C	±40V	$V_{IN} = 0, A_V = 100$		±11.2	mV
1	Input bias current, +IN	$+I_B$	25°C	±34V	$V_{IN} = 0$		±40	nA
1	Input bias current, -IN	$-I_B$	25°C	±34V	$V_{IN} = 0$		±40	nA
1	Input offset current	$I_{OS}$	25°C	±34V	$V_{IN} = 0$		±10	nA
3	Quiescent current	$I_Q$	-55°C	±34V	$V_{IN} = 0, A_V = 100, R_{CL} = .1\Omega$		10	mA
3	Input offset voltage	$V_{OS}$	-55°C	±34V	$V_{IN} = 0, A_V = 100$		±15.2	mV
3	Input offset voltage	$V_{OS}$	-55°C	±10V	$V_{IN} = 0, A_V = 100$		±21.2	mV
3	Input offset voltage	$V_{OS}$	-55°C	±40V	$V_{IN} = 0, A_V = 100$		±16.4	mV
3	Input bias current, +IN	$+I_B$	-55°C	±34V	$V_{IN} = 0$		±72	nA
3	Input bias current, -IN	$-I_B$	-55°C	±34V	$V_{IN} = 0$		±72	nA
3	Input offset current	$I_{OS}$	-55°C	±34V	$V_{IN} = 0$		±26	nA
2	Quiescent current	$I_Q$	125°C	±34V	$V_{IN} = 0, A_V = 100, R_{CL} = .1\Omega$		13	mA
2	Input offset voltage	$V_{OS}$	125°C	±34V	$V_{IN} = 0, A_V = 100$		±16.5	mV
2	Input offset voltage	$V_{OS}$	125°C	±10V	$V_{IN} = 0, A_V = 100$		±22.5	mV
2	Input offset voltage	$V_{OS}$	125°C	±40V	$V_{IN} = 0, A_V = 100$		±17.7	mV
2	Input bias current, +IN	$+I_B$	125°C	±34V	$V_{IN} = 0$		±80	nA
2	Input bias current, -IN	$-I_B$	125°C	±34V	$V_{IN} = 0$		±80	nA
2	Input offset current	$I_{OS}$	125°C	±34V	$V_{IN} = 0$		±30	nA
4	Output voltage, $I_O = 10A$	$V_O$	25°C	±18V	$R_L = 1\Omega$	10		V
4	Output voltage, $I_O = 68mA$	$V_O$	25°C	±40V	$R_L = 500\Omega$	34		V
4	Output voltage, $I_O = 4A$	$V_O$	25°C	±30V	$R_L = 6\Omega$	24		V
4	Current limits	$I_{CL}$	25°C	±16V	$R_L = 1\Omega, R_{CL} = .1\Omega$	5	7.9	A
4	Stability/noise	$E_N$	25°C	±34V	$R_L = 500\Omega, A_V = +1, C_L = 1.5nF$		1	mV
4	Slew rate	SR	25°C	±34V	$R_L = 500\Omega$	1.0	10	V/μs
4	Open loop gain	$A_{OL}$	25°C	±34V	$R_L = 500\Omega, F = 10Hz$	94		dB
4	Common-mode rejection	CMR	25°C	±15V	$R_L = 500\Omega, F = DC, V_{CM} = \pm 9V$	70		dB
6	Output voltage, $I_O = 10A$	$V_O$	-55°C	±18V	$R_L = 1\Omega$	10		V
6	Output voltage, $I_O = 68mA$	$V_O$	-55°C	±40V	$R_L = 500\Omega$	34		V
6	Output voltage, $I_O = 4A$	$V_O$	-55°C	±30V	$R_L = 6\Omega$	24		V
6	Stability/noise	$E_N$	-55°C	±34V	$R_L = 500\Omega, A_V = +1, C_L = 1.5nF$		1	mV
6	Slew rate	SR	-55°C	±34V	$R_L = 500\Omega$	1.0	10	V/μs
6	Open loop gain	$A_{OL}$	-55°C	±34V	$R_L = 500\Omega, F = 10Hz$	94		dB
6	Common-mode rejection	CMR	-55°C	±15V	$R_L = 500\Omega, F = DC, V_{CM} = \pm 9V$	70		dB
5	Output voltage, $I_O = 8A$	$V_O$	125°C	±16V	$R_L = 1\Omega$	8		V
5	Output voltage, $I_O = 68mA$	$V_O$	125°C	±40V	$R_L = 500\Omega$	34		V
5	Output voltage, $I_O = 4A$	$V_O$	125°C	±30V	$R_L = 6\Omega$	24		V
5	Stability/noise	$E_N$	125°C	±34V	$R_L = 500\Omega, A_V = +1, C_L = 1.5nF$		1	mV
5	Slew rate	SR	125°C	±34V	$R_L = 500\Omega$	1.0	10	V/μs
5	Open loop gain	$A_{OL}$	125°C	±34V	$R_L = 500\Omega, F = 10Hz$	94		dB
5	Common-mode rejection	CMR	125°C	±15V	$R_L = 500\Omega, F = DC, V_{CM} = \pm 9V$	70		dB

### BURN IN CIRCUIT



\* These components are used to stabilize device due to poor high frequency characteristics of burn in board.

\*\* Input signals are calculated to result in internal power dissipation of approximately 2.1W at case temperature = 125°C.